

MONTHLY MEMBERSHIP PROGRESS REPORT

District 3234D1

Results as of: 2/29/2024

GMT:

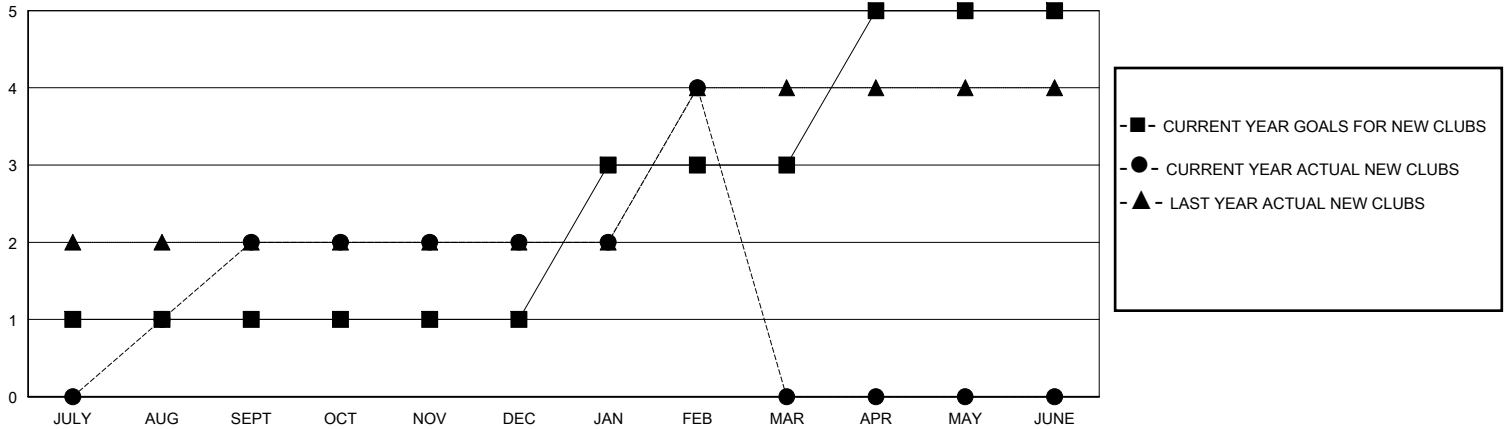
LOCATION INDIA

GMT CA

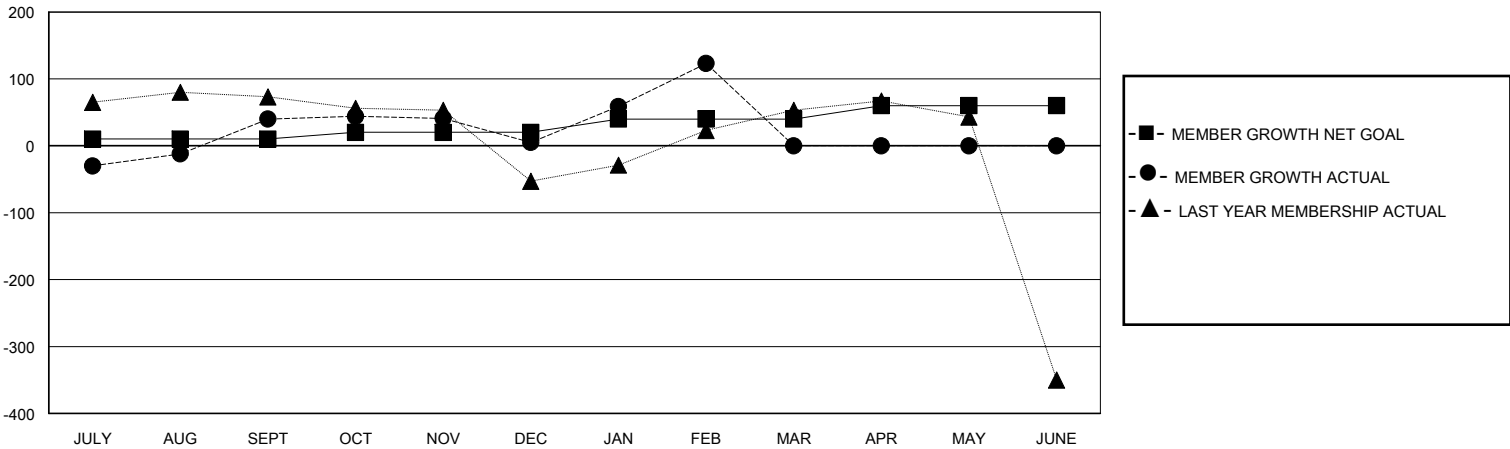
Clubs			
RESULTS FOR 2023-2024			
QUARTER	NEW CLUB GOAL	NEW CLUBS	DROPPED CLUBS
JULY/AUG/SEPT	1	2	2
OCT/NOV/DEC	0	0	3
JAN/FEB/MAR	2	2	0
APR/MAY/JUNE	2	0	0

Members			
RESULTS FOR 2023-2024			
QUARTER	MEMBER GROWTH NET GOAL	MEMBER GROWTH ACTUAL	DROPPED MEMBERS ACTUAL (including transfers)
JULY/AUG/SEPT	10	171	106
OCT/NOV/DEC	10	69	102
JAN/FEB/MAR	20	128	4
APR/MAY/JUNE	20	0	0

GOALS AND ACTUAL NEW CLUBS CUMULATIVE



GOALS AND ACTUAL MEMBERS CUMULATIVE



DROPPED CLUBS: 5	48 CLUBS OF 84 ADDED 1 OR MORE NEW MEMBERS	GENDER DISTRIBUTION
		MALE 1,913 (70.77%)
		FEMALE 790 (29.23%)
DROPPED MEMBERS	CLICK HERE FOR CUMULATIVE MEMBERSHIP DATA	TOTAL FAMILY UNIT MEMBERS 997
DECEASED 5		FAMILY MEMBERS PAYING HALF DUES 516
CLUB CANCELLED 83		
OTHER 124		
TOTAL 212		